



102R/33 Rose Lane MELBOURNE, VIC

 2  2  2

## A Statement of Manhattan

Situated on the First Floor's North-Western corner of the stylish Manhattan Tower as part of the vibrant Upper West Side complex, Apartment 102 is a modern two bedroom apartment right overlooking Lonsdale St with Northern Aspect. With Southern Cross Train Station just next door, it is in an enviable location surrounded by shops, cafes, restaurants and multiple public transports.

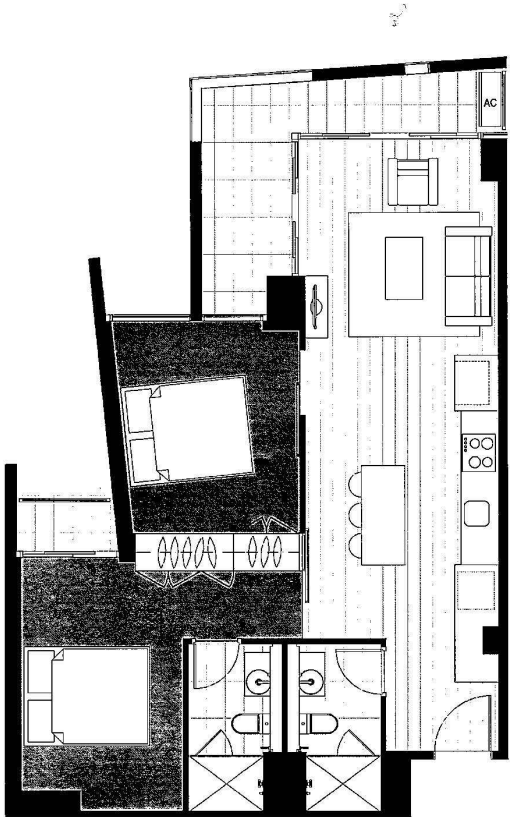
Also features: timber floor boards, floor to ceiling windows, reverse cycle heating and cooling, video intercom system?two car parks with one on a separate title plus a storage cage.

Sitting at the edge of Flinders St and connecting Yarra River and Docklands all in one line, Manhattan Tower has been a hot target of Melbourne's home owners and investors. With bo



**Gerry Wang**

0402 414 065



**TWO BEDROOM APARTMENTS**

**TYPE C2t**

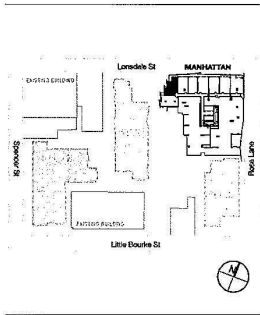
**AREA**

Internal	67.24 m <sup>2</sup>
External	11.16 m <sup>2</sup>
<b>Total Area</b>	<b>78.40 m<sup>2</sup></b>

\*All sizes measured in accordance with the Property Council of Australia guidelines.

**APARTMENT NUMBER**

- 102R
- 202R
- 302R
- 402R



**DISCLAIMER**

The plans and drawings contained in this document are indicative plans and used for illustration purposes only and should not be relied on by any party for the purchase of the lots at the development. The Contract of Sale for the development contains the plans and drawings to be relied on by the parties for the sale and purchase of the relevant lot. Coverings and window treatments may vary on apartments dependent on location in building and various facade expressions.

