



1417/339 Swanston Street MELBOURNE, VIC

 2  1

Two Bedroom Apartment in the Heart of Melbourne

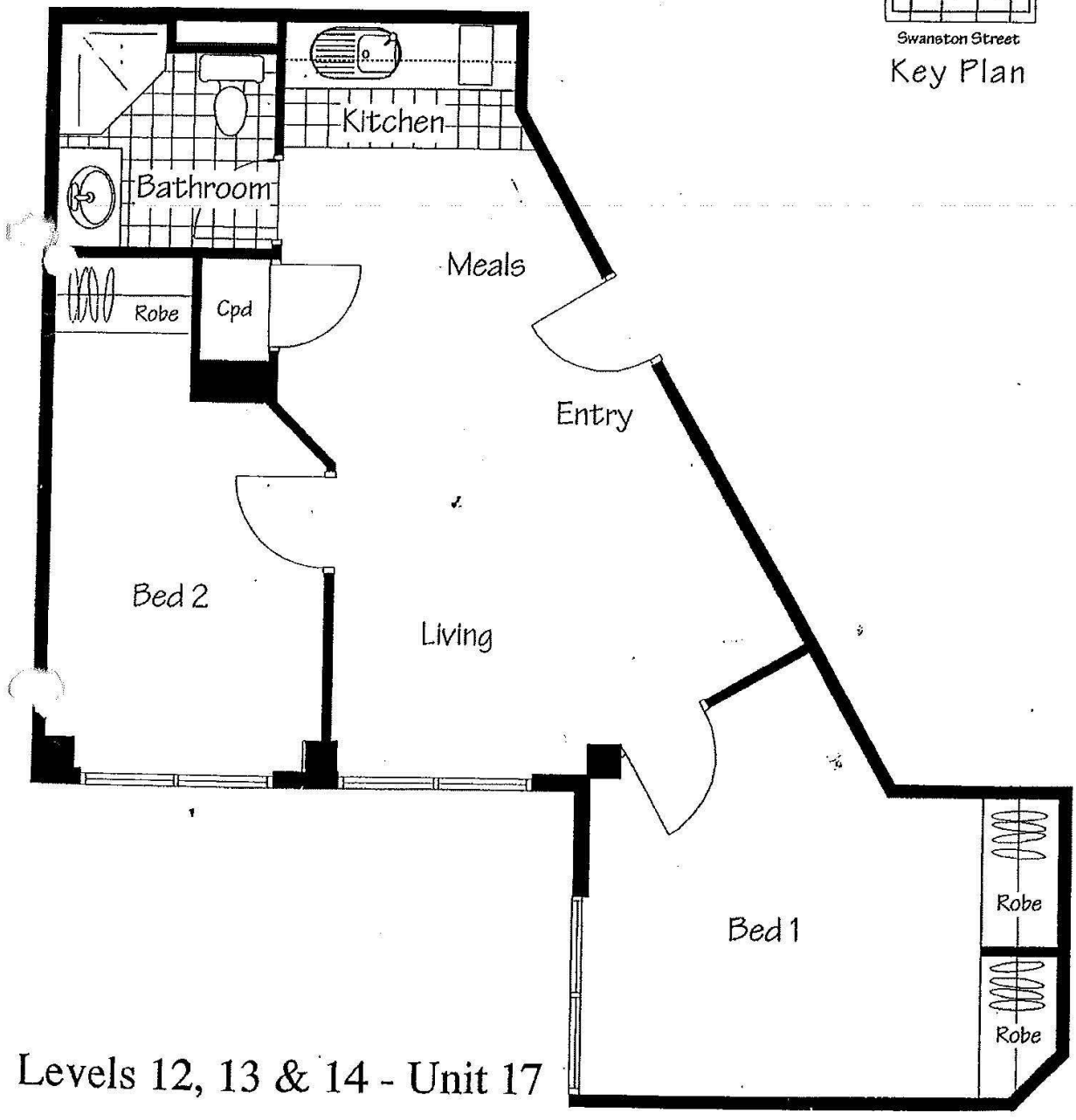
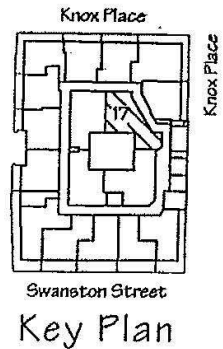
Situated right in the heart of Swanston St and most importantly conveniently located well within walking distance to Melbourne Central, RMIT, State Library, QV, shops and caf?, not to mention multiple public transport access to all direction right at your doorstep.

This two-bedroom apartment is on the 14th floor of the UniLodge on Swanston. Apartment featuring open plan living and dining, two good sized bedrooms, one bathroom, as well as kitchen with gas cook top.



Melplex Rentals

1417



Levels 12, 13 & 14 - Unit 17