



Melplex 



Melplex 



Melplex 



Melplex 

311D/5 Courtney Street NORTH MELBOURNE,

 1  1  1

Perfect Package in the Heart of Academic Zone

Perfectly situated in the heart of North Melbourne but in a tranquil street, the near new Assembly complex has been a popular residential target due to its unique location surrounded by Victoria Market, Capel St trams lines, shops and cafes, and mostly important well within Uni High and Melbourne University school zone.

311D is a lovely apartment sitting on the top floor of Building D, comprising open living space, Euro kitchen with Smeg appliances and island bench, stylish bathroom and cupboard laundry, double bedroom with BIRs and a decent sized balcony.

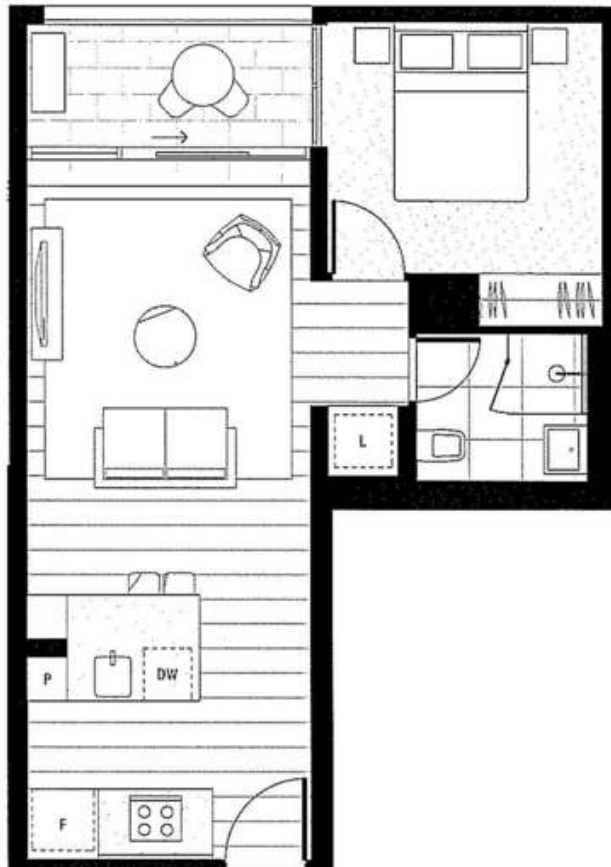


Gerry Wang

0402 414 065

ASSEMBLY

Type
D2
Level
1-3



One Bedroom Apartment

Apartment (m ²)	B111	B211	B310	C108	C208	C308	D111	D211	D311		
Internal	47.2	47.2	47.2	46.9	46.9	46.9	47.0	47.0	47.0	1 Bedroom	DW Dishwasher
External	5.5	5.5	5.5	5.3	5.3	5.3	5.3	5.3	5.3	1 Bathroom	F Fridge
Total	52.7	52.7	52.7	52.2	52.2	52.2	52.3	52.3	52.3		P Pantry
											L Laundry

AssemblyApartments.com.au

All images, views and diagrams are indicative or artist's impressions only. Dimensions, areas, fittings, specifications, siting, parking and floor finishes, landscaping and pool areas are indicative and subject to change without notice. Furniture and white goods are not included in the price. Estimated floor area is measured to the outside face of all external enclosing walls and to the external face of all corridor walls and to the centreline of all shared walls. All area calculations are based on the Property Council of Australia method of measurement guidelines. Purchasers should check the plans and specifications included in the terms of the contract of sale carefully prior to signing the contract. *Window position may vary based on the apartment level and location. Refer to the level plans for location on chosen level.

