



402/26 Breese St BRUNSWICK, VIC

 1  1  1

A Light Filled Gem

1 bedroom, 1 study, 1 bathroom and 1 car park.

Situated in the middle of the quiet Breese St in the heart of Brunswick and only steps away from the vibrant Sydney Rd shopping precinct, Hendrix is a small boutique residential development offering a desirable modern lifestyle.

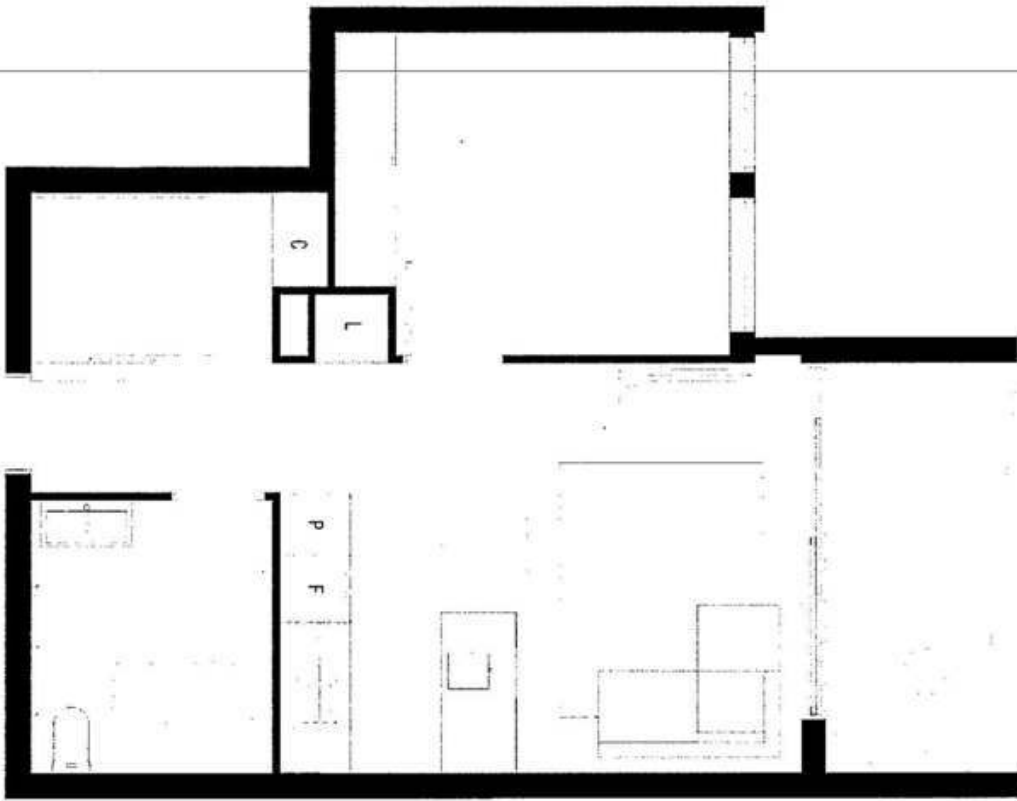
Sitting on the 4th floor of this six level building, 402 is a lovely one bedroom plus separate study apartment with the sought-after Northern aspect.

Only minutes' walks to local shops, cafes and moments from Sydney Rd tramlines and a short stroll to Brunswick Train Station, this fabulous apartment will surely tick all your boxes

Melplex 

Gerry Wang

0402 414 065



Hendrix
APARTMENTS • BRUNSWICK



APT 4-02

Internal Area:	55 m ²
External Area:	8 m ²
Total Area:	63 m ²

Journal of Interpersonal Violence 28(1) 20-36
© The Author(s) 2013
Reprints and permissions:
sagepub.com/journalsPermissions.nav