

2705/8 Downie Street MELBOURNE, VIC

 2  2  1

Spacious Corner Apartment with Spectacular Views

Sitting on the 27th floor of the famous Eiffel Tower, this spacious corner apartment is now available for sale, which provides a wonderful opportunity for urban living lovers and astute investors.

Full of natural light, the unique apartment boasts open plan living area and fully equipped Euro kitchen with Caesar stone benchtops, two double bedrooms with BIRs, master with Ensuite with laundry facilities, main bathroom, and a generous balcony enjoying the priceless 180 Degree City and Port Philip Bay views.

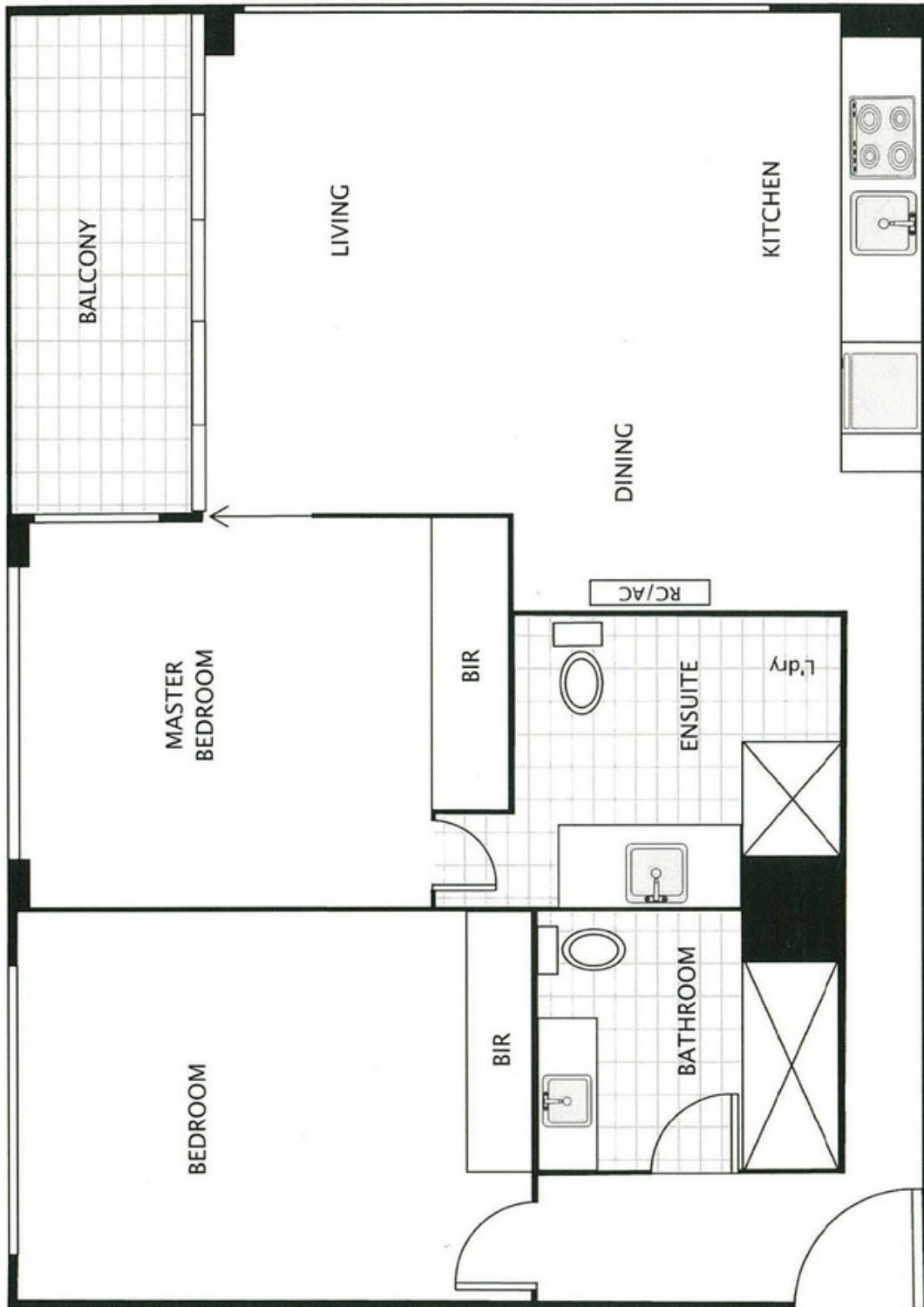
Also features: timber floor throughout the living area, Reverse-cycle Air-conditioning, Video intercom system and one security car park on Level 5.

The building is equipped with recreational facilities, including pool, gym, sauna and spa.



Gerry Wang

0402 414 065



Disclaimer The measurements provided of the land and/or property may not be 100% accurate.
In order to satisfy yourself of the exact dimensions of the property/land/or of each room, we advise you to conduct your own measurements