



509/1-11 Moreland Street FOOTSCRAY VIC

2  2  1 

Exclusively situated only about 3.8km away from Melbourne CBD and right along the idyllic Footscray Maribyrnong Riverfront, Riverside Residence is offering unparalleled city edge and modern living style, with many of Footscray's key amenities all within walking distances. Designed by Peter McDonald Architects as part of the master planned Saltriver Place Community, the recently complete complex is a new landmark residential target in this booming and vibrant inner city suburb of Footscray.

Full of natural light and with fantastic views of the City Skyline and picturesque river views, Apartment 509 delivers spacious open plan living and fully equipped Euro kitchen, 2 double bedrooms, both with BIRs, master with ensuite, stylish main bathroom, cupboard laundry and

Type : Apartment

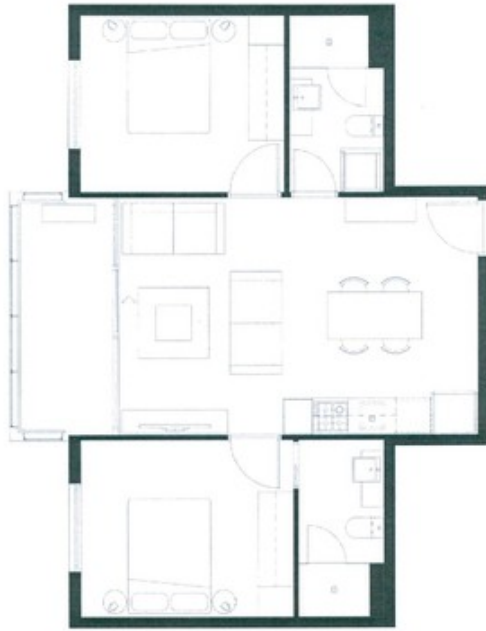
View : <https://www.melplex.com.au/sale/vic/north/footscray/residential/apartment/3829968>



Gerry Wang
03 9041 4959

[For full version visit the website](https://www.melplex.com.au)

THE
RIVERSIDE
SALTRIVER PLACE



Type SC

2 Bedrooms	Total Area	657 SqFt
2 Bathrooms	Apartment	607 SqFt
1 Car	Storage	75 SqFt



These floor plans are not intended to represent any specific unit or units. They are provided for informational purposes only. All dimensions are approximate and subject to change without notice. The actual dimensions of the units may vary from those shown on the floor plans. The floor plans are not intended to represent any specific unit or units. They are provided for informational purposes only. All dimensions are approximate and subject to change without notice. The actual dimensions of the units may vary from those shown on the floor plans.